

Master Flash® Residential



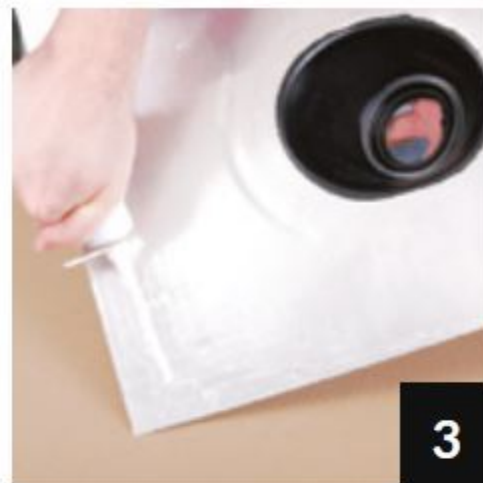
1

Select an appropriate Master Flash® Residential with a pipe range that goes below and beyond fitting. If necessary, follow the lines clearly shown on the flashing and use pliers to pull the tab to create an opening 20-30% smaller than pipe diameter.



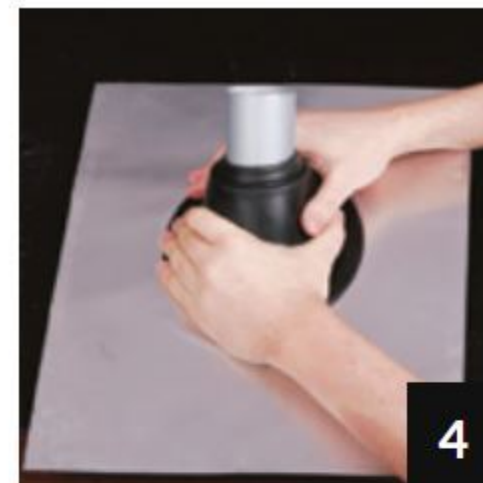
2

Finish adjustments to flashing opening by hand.



3

Apply sealant on the underneath of the metal base.



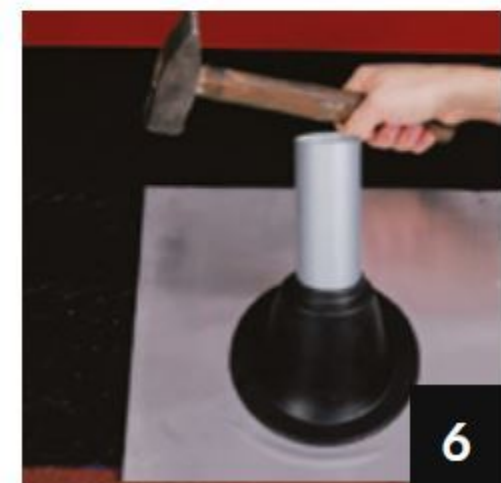
4

Slide the Master Flash® Residential down the pipe, using a non-petroleum-based lubricant to ease installation.



5

Cut shingles to fit to the top of the flashing, allowing the flashing's metal base to sit on top of roof tiles.



6

Secure and fasten the metal base to the roof.



7

Install tiles at the sides of the Master Flash® Residential.



8

Complete installation of roof tiles over the Master Flash® Residential's metal sheet base.